

## NatStar 6.1

### Introduction

The purpose of this Nat System document is to introduce the orientation of developments in NatStar version 6.1 available since April 2010. You will find in this release description: Elements relating to the implementation of Nat System's product strategy.

- Keeping in step with environment evolution, Windows 7 support.
- A summary of the new functionalities offered in NatStar 6.1.
- A list of configurations and platforms supported by NatStar 6.1
- A list of fixed bugs.

Every effort has been made to ensure the validity and accuracy of the information contained in this document. However, out of a continuing concern for quality and reliability, and for technical, marketing or timing reasons, it is possible that we will have to refine the content in the weeks to come. For this reason, this document cannot give rise to liability on the part of Nat System and does not constitute, therefore, a contractual commitment.

### Version objective

In order to respond to its customers' comments, provide them with the benefit of bug corrections, support the release of NS-DK 6.0 and offer a single runtime for all its products:

**Nat System has decided to publish NatStar 6 service pack 1 .**

NatStar 6 Service Pack 1's updates cover the following points:

- Keeping in step with environment evolution, Windows 7 support.
- Security and Https.
- NatStar TPE on Http/Https.
- Web Services Server Component.
- NatXtend.
- Databases.
- Component installation.
- Bug correction.

### Definition

The Service Pack includes a certain number of maximum priority "Po" bug corrections carried out for NatStar version 6.00 since its release.

## Installation

To make installation easier, the Service Pack uses the same installation procedure as version 6.00. This procedure installs the whole of the NatStar product. It is not necessary to install NatStar version 6.00 first.

## About

By clicking on the Help/About menu you can immediately find out which version you are using:

- For the official version or G.A. you have Version 6.00.
- For service pack SP1 you have 6.1.

## Changes in NatStar 6.1

### *Keeping in step with environment evolution, Windows 7 support*

- NatStar 6's service pack 1 extends the use of Windows platforms to the new Windows 7, 32-bit platform. It still supports Windows XP SP3 and Windows Vista SP2 as standard.
- The NSIEWEB control has been improved and tested with IE8 and Windows 7. This component is a custom control based on the Microsoft Web Browser Activex control. It provides developers with an easy method of integrating an Internet browser into a NatStar Window.
- When migrating to Vista, some customers have encountered limitations with regard to DLL loading. All these problems are solved with V6.
- With the SP1 version, version Z/OS 1.11 is now supported.

### *Security and HTTPS*

- NatStar 6's service pack 1 improves security recognition at NS-HTTP API level, in particular regarding proxys and Https (http+SSL).
- Support for the NTLM (*NT Lan Manager*) protocol in addition to basic and digest.

### *New NatStar TPE on HTTP/HTTPS component*

As from service pack 1, NatStar TPE opens and offers a new transport layer between the client and the server. It is now possible to use the **http/https** transport layer that is more economical and faster to use than older middleware.

This new New NatStar TPE on HTTP/HTTPS component is a commercial add-on.

*For further information, contact Nat System's sales department.*

### *Web Services Server Component.*

Following recurrent demand from its customers, Nat System has decided to facilitate control of Web Services and to extend the options. It is now possible to use sequences like parameter type, in particular Segment sequences, with Web Services server functions/instructions.

### *NatXtend*

**NatXtend** is a development environment that takes care of Java target generation for NS-DK and NatStar. In addition, it includes all the extension modules offered by Nat System to its Customers.

*For further information, contact Nat System's sales department*

## Databases.

Database drivers permitting tracing are supplied with NatStar 6 SP1.

Method: Definition of the NS-DBTRACE environment variable, pointing it towards a file.  
Tracing by the driver of all queries in the file concerned.

Comment: the variable can be pointed to a file pointed to by NS-TRACE , the two traces thus complementing each other.

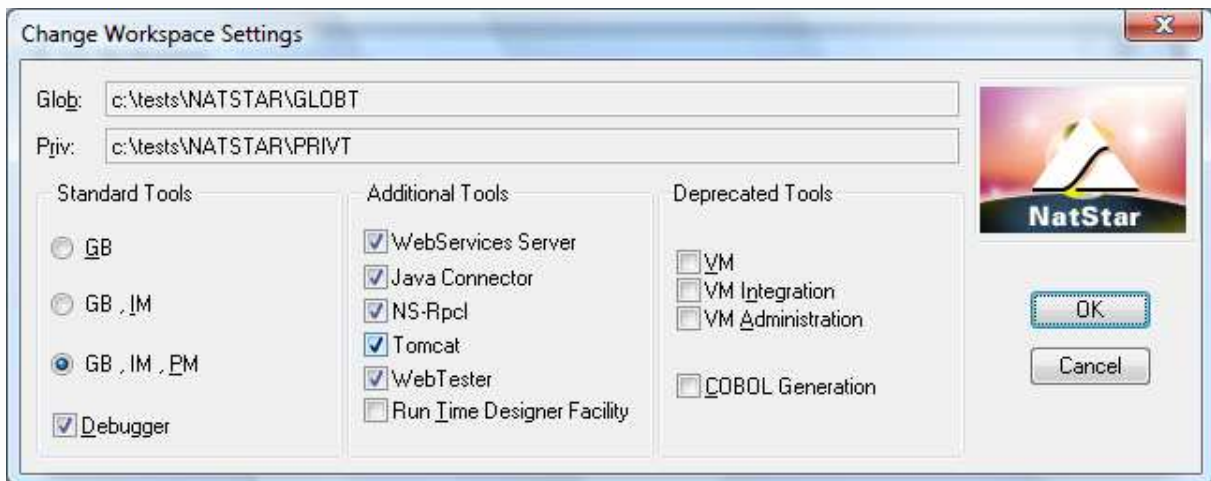
For example: SET NS-TRACE=C:\trace.txt  
SET NS-DBTRACE= C:\trace.txt

Advantage: Better bug detection when retrieving data from databases.

- Following requests from customers and in order to ensure greater compatibility with previous sql-server drivers, Nat System has created a specific driver for sql-server 2005. It uses the old Microsoft DB-LIB api; the new driver is called nsw2ms90.dll.
- IBM DB2 9.7 is supported.

## Component installation

Component installation becomes easier and can now be done directly at workspace option level. Now there will be no need to go via Options/products in order to add plug-ins, the choice being made in the File/SetWorkspace menu.



*NB: NatStar 6.00 technical bulletins describing all the improvements and extensions developed for NatStar 6 and included in NatStar 6.1 are available on the CD provided.*

## New NatStar 6.1 Plug-in

Nat System offers a certain number of plug-in software components with NatStar 6.1, as listed below:

- NatStar TPE on http/https
- NatXtend

## Other Nat System products

Nat System also offers the following products:

- NatJet: Eclipse based Java/Ajax development tool.
- NS-DK: SQL front-end development tool.

## Road Map

### *NatXtend 6.0 and Java generation targets*

NatXtend 6.0 is the Java porting platform for all NCL applications.

- This platform already has an NS-DK to NatXtend migration tool.
- By default, NatStar 6.1 is totally compatible with NatXtend.

The availability of the different bricks is as follows:

- NS-DK and NatStar GB target 1st quarter of 2010.
- NatStar IM target 2nd half of 2010.
- NatStar PM target 1st half of 2011.

### *NATSTAR 7.0*

NatStar 7.0 is planned for the 1st half of 2011.

## Support for third-party products by their respective publishers

Nat System no longer supports third-party products beyond the end of the standard support provided by their respective publishers. By way of information, here are several end of support dates for the most important software packages.

### *End of life of third-party products*

- Oracle version 8i has not been supported by Oracle since the end of 2004.
- Microsoft has not supported NT since the end of 2004.
- Microsoft has not supported Windows 98 since June 2006.
- End of support for Windows 2000 Server on 30 June 2005 by Microsoft.
- End of support for SQL Server 2000 on 4 August 2008.
- IBM has not supported Aix 4.3.3 since 31 December 2003.
- End of support for Aix 5.2 in April 2009.
- Sun OS 7 end of support, 15 august 2008.
- Tuxedo 6.5 was withdrawn on 31 May 2008 by Oracle.
- Tuxedo 7.1 was withdrawn on 31 May 2007 by Oracle.
- Tuxedo 8.1 was withdrawn on 28 February 2009 by Oracle.
- Sybase 12.5 x will no longer be supported as from December 2009.
- Oracle 9.2 has not been supported as standard since July 2007.
- Oracle 10.1, end of standard support in January 2009.

## *NatStar 6.1 will not support:*

- Tuxedo 6.5 except for AS400.
- Tuxedo 7.1, 8.1 .
- Windows 2000 Server, Windows NT4 , Windows 98.
- IBM AIX 4.x.x et AIX 5.2 .
- Sun Solaris 7.
- Sybase 12.5.x.
- SQL server 2000.
- Oracle 9.2 et 10.1.
- WinRunner.

## Supported configurations

Note that Nat System only guarantees the support and compatibility of the environments listed below.

### *NatStar 6.1: development environment*

The following 32 bit operating systems are supported:

- Windows XP service pack 3
- Windows Vista "professional service pack 2

Windows 7

The compilers supported are:

- Microsoft Visual Studio 2008
- Microsoft Visual Studio 2010
- Microsoft Visual Studio Express (free).

### *NatStar 5.00: client environment*

List of compatibilities and configurations supported by NatStar client 6.1.

#### **Windows XP (32 bits) SP3**

The following DBMS drivers are supported:

- DB2 9.0,9.5,9.7
- Oracle version 10.2 (XA, no XA)
- Oracle version 11.1 (XA, no XA)
- Sql Server 2005\*,2008\*
- ODBC 3.51
- Sybase 15
- MySql 5.0\*
- Informix with Iconnect 2.9
- 

The following communication services are supported:

- Tuxedo 9.1,10
- NatStar/TP/E/http/https
- NatRes

**Windows Vista (32 bits) SP2**

The following DBMS drivers are supported:

- DB2 9.0,9.5,9.7
- Oracle version 10.2 (XA, no XA)
- Oracle version 11.1 (XA, no XA)
- Sql Server 2005\*,2008\*
- ODBC 3.51
- Sybase 15
- MySql 5.0\*
- Informix with Iconnect 2.9
- 

The following communication services are supported:

- Tuxedo 9.1
- NatStar/TP/E/http/https
- NatRcs

**Windows 7 (32 bits)**

The following DBMS drivers are supported:

- DB2 9.0,9.5,9.7
- Oracle version 10.2 (XA, no XA)
- Oracle version 11.1 (XA, no XA)
- Sql Server 2005\*,2008\*
- ODBC 3.51
- Sybase 15
- MySql 5.0\*
- Informix with Iconnect 2.9

The following communication services are supported:

- Tuxedo 9.1
- NatStar/TP/E/http/https
- NatRcs

**AIX 5.3 (32 bits) characters and (32 bits) X11**

The following DBMS drivers are supported:

- Oracle version 10.2
- Oracle version 11.1
- Sybase 15
- Mysql 5.0
- 

The following communication services are supported:

- Tuxedo 9.1, 10
- NatStar/TP/E/http/https
- NatRcs

The supported compiler is:

- C++-compiler: IBM XL C/C++ 8.0

**Linux RedHat Enterprise 5 X11\***

The following DBMS drivers are supported:

- Oracle version 10.2
- Oracle version 11.1
- Mysql 5.0

The following communication services are supported:

- Tuxedo 9.1, 10
- NatStar/TP/E/http/https
- NatRcs

## NatStar 6.1 : server environment

List of compatibilities and configurations supported by NatStar client 6.1.

### Windows 2003 server ( 32 bits)

The following DBMS drivers are supported:

- DB2 9.0,9.5,9.7
- Oracle version 10.2 (XA, no XA)
- Oracle version 11.1 (XA, no XA)
- Sql Server 2005\*,2008\*
- ODBC 3.51
- Sybase 15
- MySql 5.0\*
- Informix with Iconnect 2.9
- 

The following communication services are supported:

- Tuxedo 9.1
- NatStar/TP/E/http/https
- NatRcs

### Windows 2008 server ( 32 bits)

The following DBMS drivers are supported:

- DB2 9.0,9.5,9.7
- Oracle version 10.2 (XA, no XA)
- Oracle version 11.1 (XA, no XA)
- Sql Server 2005\*,2008\*
- ODBC 3.51
- Sybase 15
- MySql 5.0\*
- Informix with Iconnect 2.9
- 

The following communication services are supported:

- Tuxedo 9.1
- NatStar/TP/E/http/https
- NatRcs

### HP-UX 11.iv2 (Itanium -32 bits)

The following DBMS drivers are supported:

- Oracle version 10.2 (XA, no XA)
- Oracle version 11.1 (XA, no XA)
- Sybase 15

The following communication services are supported:

- Tuxedo 9.1
- NatStar/TP/E/http/https
- NatRcs

The supported compiler is:

- HP aC++ for HP-UX 11.00 & 11i (6.10)

### HP-UX 11iv2 (Itanium-64 bits)

The following DBMS drivers are supported:

- Oracle version 10.2 (XA, no XA)
- Oracle version 11.1 (XA, no XA)
- Sybase 15

The following communication services are supported:

- Tuxedo 9.1
- NatStar/TP/E/http/https
- NatRcs
- MySql 5.0

The supported compiler is:

- HP aC++ for HP-UX 11.00 & 11i (6.10)

**AIX 5.3 (32 bits)**

The following DBMS drivers are supported:

- Oracle version 10.2 (XA, no XA)
- Oracle version 11.1 (XA, no XA)
- Sybase 15
- MySQL 5.0\*
- Informix with Iconnect 2.90 (no XA)

The following communication services are supported:

- Tuxedo 9.1,10
- NatStar/TP/E/http/https
- NatRcs

The supported compiler is:

- C++compiler: IBM XL C/C++ 8.0

**AIX 5.3 (64 bits)**

The following DBMS drivers are supported:

- Oracle version 10.2 (XA, no XA)
- Oracle version 11.1 (XA, no XA)
- Sybase 15
- MySQL 5.0\*
- Informix with Iconnect 2.9 (no XA)

The following communication services are supported:

- Tuxedo 9.1,10
- NatStar/TP/E/http/https
- NatRcs

The supported compiler is:

- C++compiler: IBM XL C/C++ 8.0

**AIX 6.1. (32 bits)**

The following DBMS drivers are supported:

- Oracle version 11.1 (XA, no XA)
- Sybase 15
- MySQL 5.0\*

The following communication services are supported:

- Tuxedo 10
- NatStar/TP/E/http/https
- NatRcs

The supported compiler is:

- C++compiler: IBM XL C/C++ 10.1

**AIX 6.1. (64 bits)**

The following DBMS drivers are supported:

- Oracle version 11.1 (XA, no XA)
- Sybase 15
- MySQL 5.0\*

The following communication services are supported:

- Tuxedo 10
- NatStar/TP/E/http/https
- NatRcs

The supported compiler is:

- C++compiler: IBM XL C/C++ 10.1

**Sun Solaris 10 (32 bits)**

The following DBMS drivers are supported:

- Oracle version 10.2 (XA, no XA)
- Oracle version 11.1 (XA, no XA)
- Sybase 15
- MySQL 5.0\*
- Informix with Iconnect 2.9 (no XA)
- 

The following communication services are supported:

- Tuxedo 9.1,10
- NatStar/TP/E/http/https
- NatRcs
- 

The supported compiler is:

- Sun Studio 11

**Sun Solaris 10 (64 bits)**

The following DBMS drivers are supported:

- Oracle version 10.2 (XA, no XA)
- Oracle version 11.1 (XA, no XA)
- Sybase 15
- MySQL 5.0\*

The following communication services are supported:

- Tuxedo 9.1,10
- NatStar/TP/E/http/https
- NatRcs

The supported compiler is:

- Sun Studio 11

**Linux RedHat Enterprise 5\***

The following DBMS drivers are supported:

- Oracle version 10.2 (XA, no XA)
- Oracle version 11.1 (XA, no XA)
- Mysql 5

The following communication services are supported:

- Tuxedo 9.1,10
- NatStar/TP/E/http/https
- NatRcs

The supported compiler is:

- GCC (GNU Compiler Collection)

**MVS CICS/ MVS IMS/MVS BATCH z/OS1.11**

The following communication services are supported:

- NatStar/TP/E CICS

The following communication protocols are supported:

- TCPIP ( for CICS and IMS(OTMA))
- ECI/CICS

**AS/400 V5R2**

The following communication services are supported:

- Tuxedo 6.5
- NatStar/TP/E/http/https

The following communication protocols are supported:

- TCPIP
- APPC

**Notes**

Informix drivers do not support the dynamic strings

Sql Server 2005 driver is ODBC or the new nsw2ms90.dll.

There is no compatibility between 32 bits and et 64 bits targets

- Redhat : on demand

## Product retirement

### *A version's technical state*

The status of each technical state of a version passes successively from "current" to "transition" to "withdrawn".

A technical state starts with the general availability of a major, minor or maintenance version and results in:

- The assignment of "current" status to this version of the product
- The assignment of "transition" status to the previous "current" version of the product
- The assignment of "withdrawn" status to the previous "transition" version of the product

The table below summarizes the respective services guaranteed for the "current", "transition" and "withdrawn" versions of a product.

**Sale:** technical state available for sale.

**Changes:** operational coverage of the product changes with the next versions.

**Bugs:** analysis and correction of bugs is scheduled in current or future versions according to priorities.

**Version increments:** the product is ported onto new versions of the operating systems.

**Use:** assistance (helpdesk) is guaranteed by the Hot-Line center.

	<b>Sale</b>	<b>Evolu.</b>	<b>Bugs P=0</b>	<b>BugsP=1,2,3</b>	<b>Version increments</b>	<b>Use</b>
<b>Current</b>	Yes	Yes (1)	Yes	Yes	Yes	Yes
<b>Transit</b>	No	No	Yes	No	No (2)	Yes
<b>Retired</b>	No	No	No	No	No	No

(1) *The current version changes with the next technical state of the product.*

(2) *In some circumstances, version increments may be symmetrically compatible with the previous technical state in transition.*

Nat System supports a version of its products for a minimum period of three years. A version is supported for a minimum period of 1 year as a current version, then for a minimum period of 1 year as a transition version of the product.

Version 3.02 will be withdrawn starting may 2009.

Version 5.3 will be maintained in transition until the release of version 7.00 (non contractual designation).

Version 6.1 replaces version 6.00.

## List of fixed bugs in 6.1

ID	Description
1907	Faire des services Web et connecteur en Https.
2261	Debugmem sous Unix.
2523	Après un T_WRITELN , T_ERROR% ne vaut plus 0 comme en 2.60
2527	Plantage sur changement de projet avec le grep ouvert.
2542	Plantage sur "copier/coller sous NSWP en mode client /serveur (connexion bureau à distance)
2550	Evenement character.
2552	Pb d'affichage sous NSCALC V5 d'un fichier créé dans une version antérieure.
2553	Dans SHEETBOX, problème en supprimant des lignes par code.
2558	Il y a un service Web qui génère une instruction de l'affectation de la réponse vide.
2561	Problème avec STV_GETCOLUMNEDITABLE%
2571	PROBLEME DECIMALES
2581	Le .LOCKED ne fonctionne pas en lecture sur les SHEETBOX
2583	Trap quand on ferme une fenêtre NSCALC avec un Picture button
2596	Problème de performance pour un service web qui retourne un très gros buffer
2603	NS_CALC mauvaise gestion des bordures de cellules (Selection ligne à ligne) et des coordonnées
2607	Anomalie sur saisie dans une SHEETBOX
2629	Problème avec la permutation de colonnes sur une SHEETBOX
2635	MNU_HIDE ne bloque pas les touches raccourcies
2642	Erreur "Buffer too small for word wrapping text" en inserant un buffer de 988 char dans une MLE de taille 1000
2646	Il y a un Service Web qui génère une instruction de l'affectation de la réponse vide !
2671	Problème de gestion du setcheckmode=true% sur un ENTRY FIELD, vis a vis d'un PICTURE BUTTON
2672	Problème avec les SHEETBOX éditables et STVEVENT_MODIFY%
2674	Plantage sur message dans STV_EVENT_MODIFY
2678	Problème de barre de scroll horizontale dans un calque NSCALC
2681	Erreur sur SHEETBOX lorsqu'on utilise une pop up "clic bouton droit" pour supprimer une ligne.
2683	Génération de service web : gérer <xs:simpleContent><xs:extension> pour l'heritage des types de base.
2685	SHEETBOX : malgré le LOCK, l'événement EXECUTED est déclenché par le double clic
2719	Fuite mémoire lors d'appels de la fonction NWX_NODELIST_GETFIRST
2721	Fuites mémoires sur Unix avec l'utilisation de NWX_DOCUMENT_LOAD
2722	Erreurs de compilation après l'import d'un service web
2726	Dans THINGS_SET_VAR, le nom de la variable est sensible à la case, alors que ce n'était pas le cas avant.
2727	NSWP : copier / coller sous vista provoque une assertion NSW2CLIP /P:444
2736	LISTBOX : La largeur des colonnes ne prend pas en compte la taille des polices.
2771	Soap parameter is null : erreur de parsing du flux xml
2776	Troncation sur fenêtre popup de nsieweb
2777	Sur NSIEWEB, si on code "close self%" sur le changed on a une fatal erreur windows
2793	Un WSDL document littéral engendre une sollicitation rpc encoded ce qui provoque une erreur sur le serveur

2808	Coder l'INIT dans le CUSTOM CONTROL NSIEWEB provoque un dysfonctionnement
2809	Evolution de l'API NSCUSTIE concernant le déclenchement du code Java Script
2817	new [size0]@pArr1.r provoque une erreur sur Unix
2819	Troncation sur fenêtre popup de NatBrowser
2831	Phrase tronquée sur un CALC
2838	Problème de gestion des caractères accentués
2840	NSIEWEB : consommation mémoire d'environ 1Mo par seconde jusqu'au plantage du poste en scrutant le DOM
2841	Web Service : Invalid parameter type. Expected : <STRUCT> but was : <SIMPLE>
2844	DANS UNE SHEETTBOX, quand on fait STV_SETCELLRGBBACKCOLOR sur un noeud créé par APPEND, il y a fatal erreur.
2851	Limitation globale des libelles sur un CLASSIFIER
2853	Ajout d'API sur NSIEWEB
2866	les variables d'appel des procédures stockées sont encore taillées en CHAR(4) en SQL2005-ODBC
2885	Problème d'affichage du résultat d'un calcul (affichage non immédiat)
2895	A la fermeture de NatStar, une boîte d'erreur s'affiche avec des infos inexploitable
2902	Problème avec UNCATURE intègre dans une instruction
2908	Limite du nombre de lignes imprimées en PDF (15000 environ)
2908	Limite du nombre de lignes imprimées en PDF (15000 environ)
2921	Troncature : demande de compatibilité de génération de code entre les versions 3 5 et 6
2927	Pouvoir passer des paramètres applicatifs dans NS-RPCL
2929	Erreur dans le MENU EDIT : 2 fois CHANGE CASE / UPPER CASE et pas de LOWER CASE
2932	Intégrer un fichier manifest dans la dll nsw2http.dll
2943	L'action recherche sur une Sheet affiche un entry-field parfois mal positionnée
2950	Optimiser le BufferSize pour tous les curseurs dans le driver DB Oracle
2951	Implémenter le SetGlobalBufferSize pour les bases Oracle
2956	Avec des bitmap transparente on a des lignes rouges dans la boîte de propriétés.
2971	Dans la version GA de NatStar V6, si 2 datetimestamp dans une fenêtre, erreur d'affichage (sous VISTA)
2986	Un warning 64 bits est soulevé sur un dispose à tort sur un pointeur en in/out
2998	Lors de l'export, la ligne représentant la SHEETBOX est tronquée à 1024 dans le fichier .EXP

NatStar is a registered trademark of Nat System.  
 All other trademarks mentioned in this document are registered trademarks of their respective companies.